



NEWSLETTER 3

December 2015

## NU2016 is being filled with content!

The interest in this conference is great. This makes us very grateful! After the deadline 1 December 250 contributions had been registered. These are now subject to the review process with two reviewers per contribution. Notification of accepted contributions will be given at the latest on 15 February.

### Registration for the conference opened 17 December 2015!

The overall theme of the conference is *Higher Education in Society – Society in Higher Education*. Under this theme we have chosen to focus on matters around democracy, participation, and digitalisation. Our speakers are particularly committed to these areas. We have deliberately invited speakers who work both outside of and at higher education institutions and universities to broaden the perspective and illustrate the interplay which should exist between higher education and society.

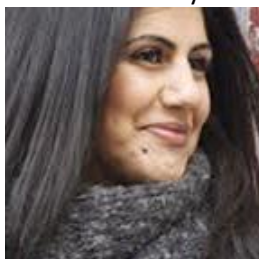
### Key Speakers

#### Participation



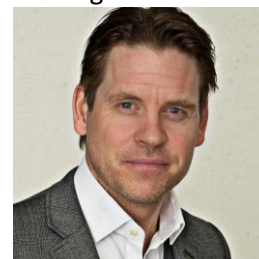
Bernard Petiot  
MD, Cirque du Soleil

#### Democracy



Golnaz Hashemzadeh Bonde  
Auhtor

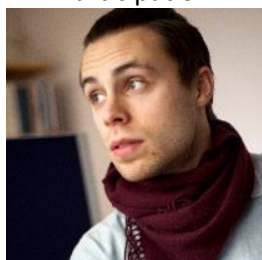
#### Digitalisation



Pär Lager  
MD, Education Group Anthon B Nielsen

### Invited Speakers

#### Participation, Student Participation



Johan Gärdebo  
Doctoral Student at the Division of History  
of Science, Technology and Environment  
at the Royal Institute of Technology

#### Pedagogic Leadership



Jens Dolin  
Professor at the University of Copenhagen

#### Real & Virtual Rooms for Learning



Communication for Development  
Malmö University

## **Important dates!**

### **Dates for contributions**

Notification of acceptance 15 February

### **Dates for early registration**

Early registration 15 Dec - 1 Mar 2016

Last registration date 15 May 2016

The fee for early registration to the conference is 3900 SEK excl. conference dinner, 15/12-1/3.

The fee for later registration is 4600 SEK excl. conference dinner 2/3 - 15/5.

MORE INFO AT [www.nu2016.se](http://www.nu2016.se)

## **Invitation to arrange a pre-conference!**

In connection to the conference, NU2016 offers the possibility to arrange a pre-conference for networks and groups. For interest in this, please contact [patricia.staaf@mah.se](mailto:patricia.staaf@mah.se)

**If you are interested to exhibit during NU2016, please contact Christina Hansson**  
[christina.hansson@bth.se](mailto:christina.hansson@bth.se)